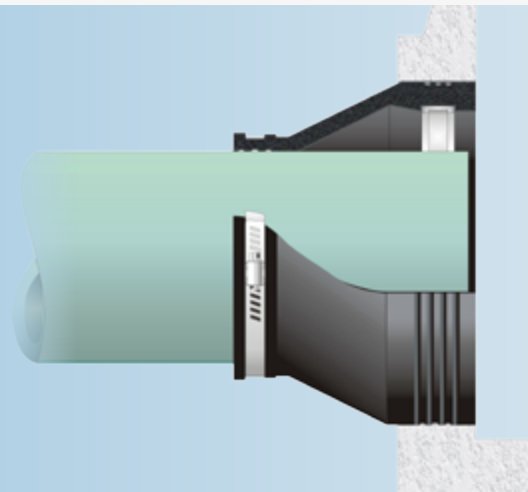


# Kor-N-Seal® I

## 106/406 Series Pipe-to-Manhole Connector



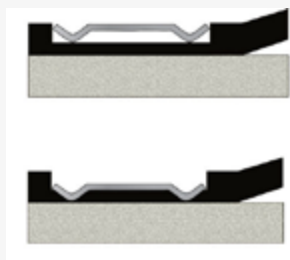
Most widely used flexible connector in sanitary sewer applications throughout the world

Easy-to-Install

Meets the specifications of ASTM C923

### PATENT

Patented Waveband technology creates a more effective seal by concentrating the compressive force of the expansion band. The rubber is "captured" between the band and the concrete.



### ORDERING INFORMATION

Kor-N-Seal I: 106/406 Series Pipe-to-Manhole Connector.

The 106 Series connector is 8 inches long, the 406 Series connector is 6 inches long. The number following the hyphen in our model numbers is the required hole size.

### RECOMMENDED TORQUE VALUES

Connectors with 8" hole size and smaller:

Steel Wedge - 1/2"      Socket Wrench - 8 ft. lbs.

Connectors with 10-20" hole sizes:

Ex Series - 1/2"      Socket Wrench - 12 ft. lbs.

Steel Wedge - 1/2"      Socket Wrench - 12 ft. lbs.

Preset torque limiters are available.

Contact Customer Service at 1-800-626-2180 for more information.

### FOR LARGER PIPE SIZES REFER TO KOR-N-SEAL II SERIES CONNECTORS

206 Series – For pipe sizes 15" - 51" in diameter. Larger sizes available – contact Customer Service.

306 Series – To fit larger pipe into smaller diameter manholes.

506 Series – Designed specifically for stormwater applications

### USING CORRUGATED PIPE

Adapters are required when using Corrugated Pipe. Refer to the Corrugated Pipe Adapter Data Sheet for details.

## WEDGE STYLE CONNECTORS EX SERIES PLASTIC OR STAINLESS STEEL

Installation requires a 1/2" socket wrench & preset torque limiter.



## TOGGLE STYLE CONNECTORS (JACK-IN-STYLE)

Installation requires a hydraulic jack assembly.



PIPE O.D. RANGE (inches)	MODEL NUMBER	NOMINAL HOLE SIZE (inches)
1.50-4.80	S106-7MWS	7"
3.50-4.50	S106-7WS	7"
4.20-6.40	S106-8SRWS	8"
1.50-4.80	S106-8MWS	8"
5.10-5.90	S106-8WS	8"
*6.00-6.75	S406-10AW	10"
*7.50-8.20	S406-10W	10"
*6.00-6.75	S406-10.5AW	10 <sup>1/2</sup> "
*7.50-8.70	S406-10.5W	10 <sup>1/2</sup> "
*6.00-7.00	S406-11BW	11"
*7.50-9.00	S406-11AW	11"
*3.50-6.90	S106-12M	12"
*6.00-7.00	S406-12CW	12"
*6.25-7.50	S406-12BW	12"
*7.50-9.00	S406-12AW	12"
*9.00-10.20	S406-12W	12"
*5.75-7.00	S106-12BW	12"
*7.00-8.50	S106-12AW	12"
*8.25-9.75	S106-12W	12"
*9.50-11.25	S106-14AW	14"
*9.50-11.25	S106-16BW	16"
*11.25-13.00	S106-16AW	16"
*13.00-14.20	S106-16W	16"
*14.00-15.50	S106-20BW	20"
*15.50-17.00	S106-20AW	20"
*17.00-18.15	S106-20W	20"

Refer to Recommended Installation Instructions.

\*These sizes available in Plastic "EX" Wedge or Steel Wedge.

PIPE O.D. RANGE (inches)	MODEL NUMBER	NOMINAL HOLE SIZE (inches)
1.50-4.80	S106-7MT	7"
3.50-4.50	S106-7T	7"
4.20-6.40	S106-8SRT	8"
1.50-4.80	S106-8MT	8"
5.10-5.90	S106-8T	8"
6.00-6.75	S406-10AT	10"
7.50-8.40	S406-10T	10"
6.00-6.75	S406-10.5AT	10 <sup>1/2</sup> "
7.50-8.90	S406-10.5T	10 <sup>1/2</sup> "
6.00-7.00	S406-11BT	11"
7.50-9.00	S406-11AT	11"
3.50-6.90	S106-12MT	12"
6.00-7.00	S406-12CT	12"
6.25-7.50	S406-12BT	12"
7.50-9.00	S406-12AT	12"
9.00-10.50	S406-12T	12"
5.75-7.00	S106-12BT	12"
7.00-8.50	S106-12AT	12"
8.25-9.75	S106-12T	12"
9.50-11.25	S106-14AT	14"
9.50-11.25	S106-16BT	16"
11.25-13.00	S106-16AT	16"
13.00-14.50	S106-16T	16"

Refer to Recommended Installation Instructions.

To Install 7" & 8" Toggle Style Connectors:

Expander Assembly (p/n 90225) 8" Extension (p/n 13808)

Refer to 206 or 306 Series for larger diameters.

**Covered under U.S. Patent No. 5,738,359**



**TRELLEBORG**

WWW.TRELLEBORG.COM/PIPE-SEALS