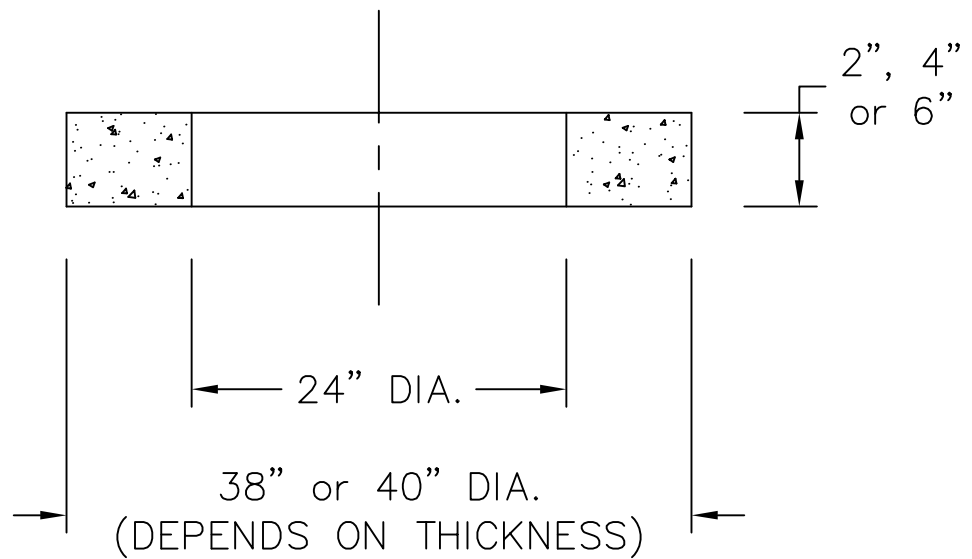
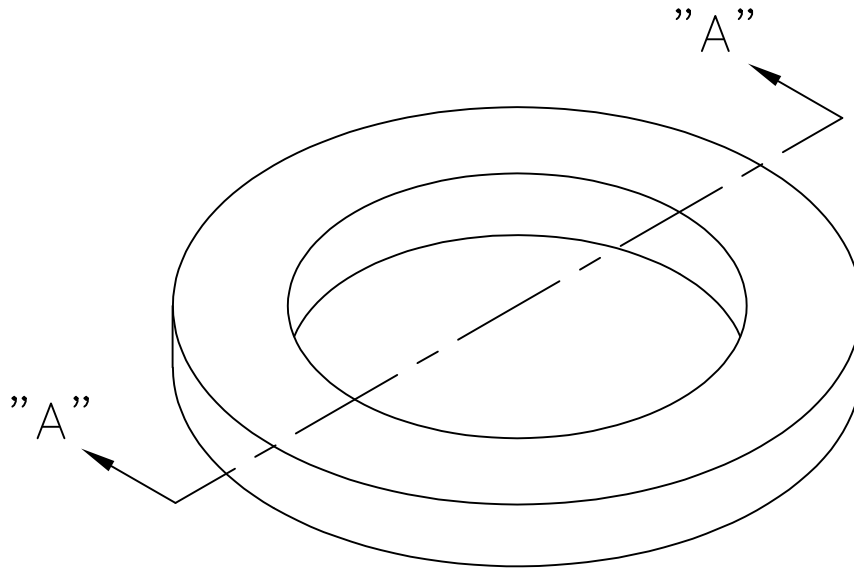


(4) BOLT HOLES ARE AVAILABLE
IN 2" AND 6" THICK RINGS



SECTION "A-A"

CONFORMS TO ASTM C478 SPECIFICATIONS



MONARCH PRECAST CONCRETE

425 NORTH DAUPHIN STREET
WWW.MONARCHPRECAST.COM

ALLENTOWN, PA. 18109

PHONE (610) 435-6746
FAX (610) 437-7133

24" DIA. SOLID ADJUSTING RING