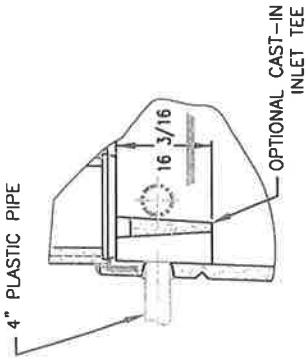
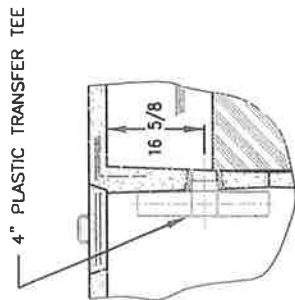


DETAIL 1



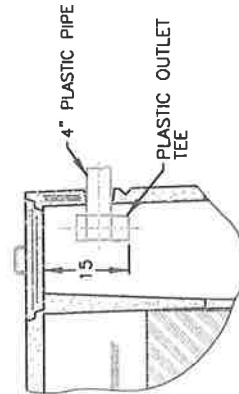
OPTIONAL INLET TEE

DETAIL 2

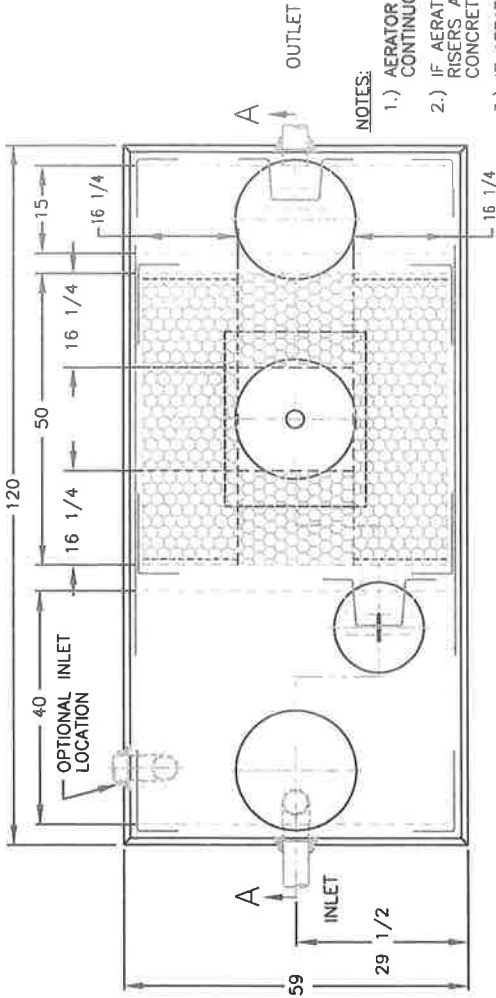


OPTIONAL TRANSFER TEE

DETAIL 3

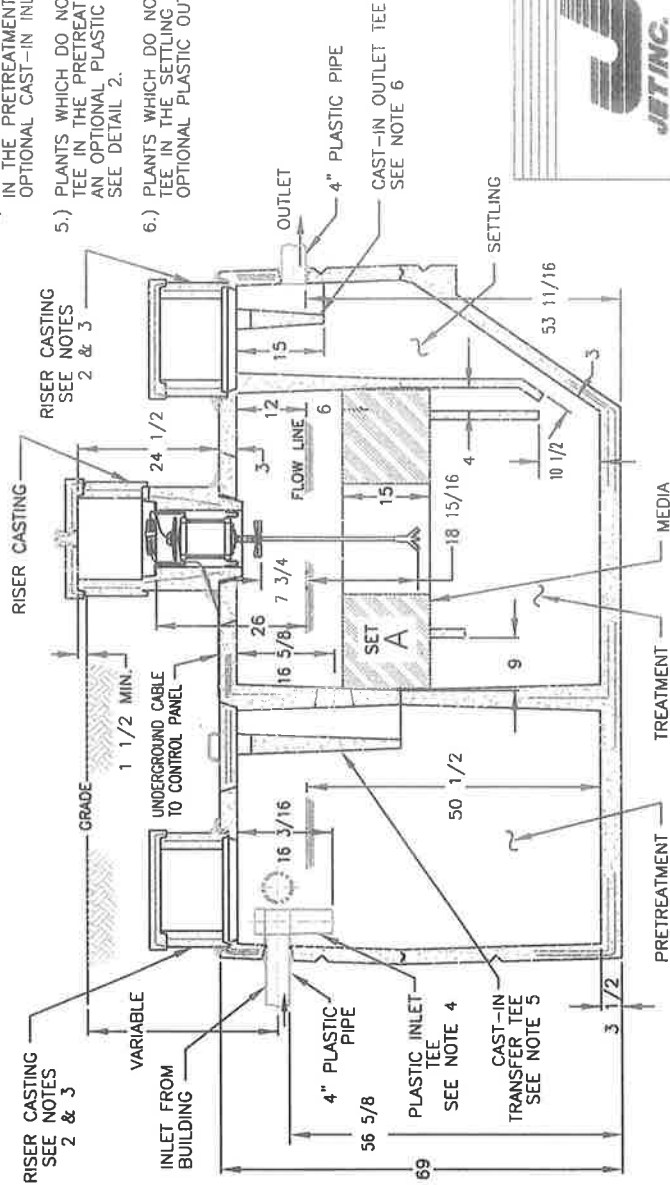


OPTIONAL OUTLET TEE



NOTES:

- 1.) AERATOR MODEL 700LL IN CYCLED OR CONTINUOUS OPERATION MUST BE USED.
- 2.) IF AERATOR MOUNTING CASTING HAS NO RISER, RISERS ARE NOT REQUIRED HERE. REMOVABLE CONCRETE COVERS ARE REQUIRED.
- 3.) IF AERATOR MOUNTING CASTING HAS A RISER(S), COVERED RISERS ARE REQUIRED HERE. RISERS SHOULD BE DEVELOPED TO GRADE OR TO 8'-12" BELOW GRADE.
- 4.) PLANTS WHICH DO NOT USE A PLASTIC INLET TEE IN THE PRETREATMENT COMPARTMENT MAY USE AN OPTIONAL CAST-IN INLET TEE. SEE DETAIL 1.
- 5.) PLANTS WHICH DO NOT HAVE A CAST-IN TRANSFER TEE IN THE PRETREATMENT COMPARTMENT MAY USE AN OPTIONAL PLASTIC TRANSFER TEE. SEE DETAIL 2.
- 6.) PLANTS WHICH DO NOT HAVE A CAST-IN OUTLET TEE IN THE SETTLING COMPARTMENT MAY USE AN OPTIONAL PLASTIC OUTLET TEE. SEE DETAIL 3.



SECTION A-A

Figure 1  
NSF Test Plant (500 GPD)

REVISED: 05-18-01f  
 DRAWN BY: R. P. T.  
 APPROVED BY: D.S.M.  
 DATE: 1-18-95  
 SCALE: 12  
 COMPONENT PARTS & INSTALLATION  
 © JET INC.  
 JET INC.  
 PROPRIETARY INFORMATION IS SHOWN IN THIS DRAWING. NO REPRODUCTION OR TRANSMISSION OF THIS DRAWING WITHOUT WRITTEN PERMISSION.